
Specification of the TFCC claims

Thailand Forest Certification Council - TFCC

The Federation of Thai Industries



| | | |
|--|---|--|
| Document name: Specification of the TFCC claims | | |
| Document title: TFCC SD 001:2017 | Issue date: 11 December 2017 | Application date: 2 January 2018 |
| Edition No. : 1 | Performed by: Mr.Surakit Darncholvichit | Approved by: Dr.Naruekamol Pookhao |

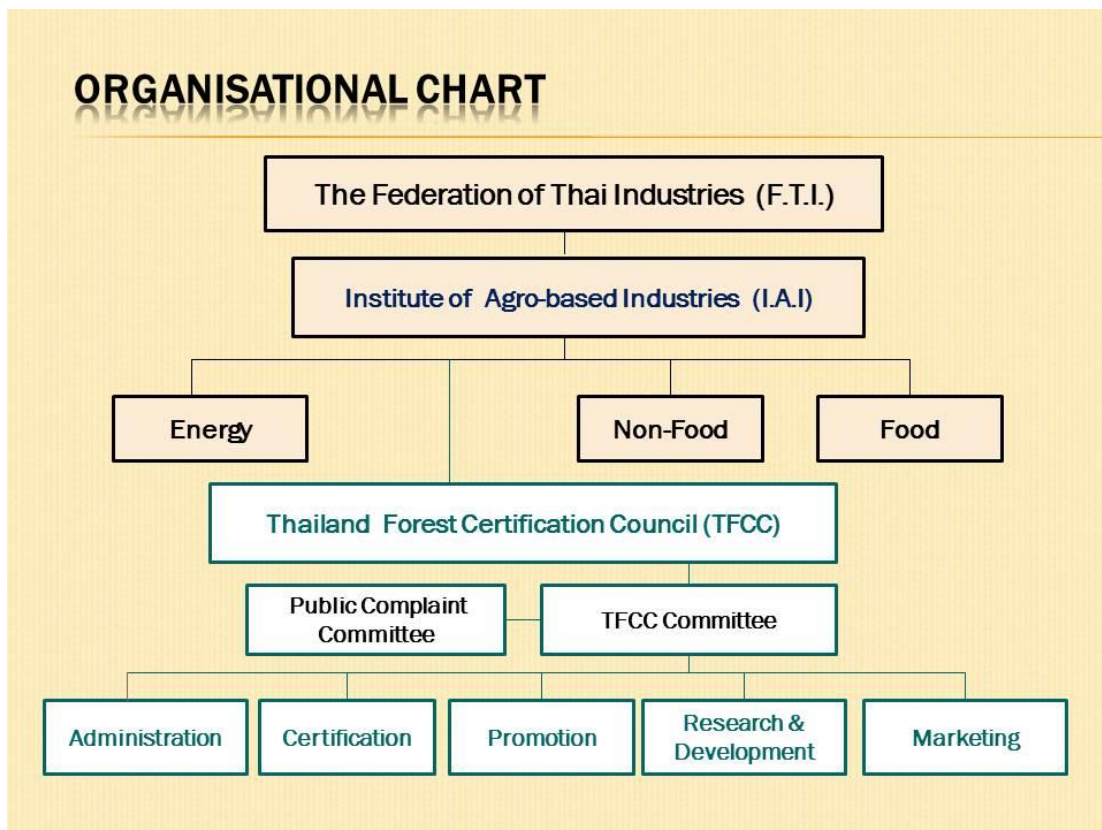
Foreword

PEFC (Programme for the Endorsement of Forest Certification schemes) is an international organisation, and TFCC (Thailand Forest Certification Council) is a national organisation, promoting sustainable forest management through Forest Management certification, Chain of Custody certification and labeling of forest based products. Products with TFCC claim and /or label deliver confidence that raw material originates in sustainably managed forest.

PEFC is reliable to the endorsement of the national organisation under the forest certification schemes with compatible to the specifications and requirements of PEFC and functionable to the auditing programme and endorsement process.

In Thailand, F.T.I. (The Federation of Thai Industries) is acting on the PEFC Council's behalf as PEFC authorised body.

In terms of the organisational chart, TFCC is acting as an authorized body of both a focal point of Institute of Agro-based Industries (I.A.I) and F.T.I., on behalf of PEFC Council's. TFCC has empowered by all sectoral stakeholders and establishes the sustainable forest management system for well-known in international level together with acknowledgement and implementation of the international management system.



1 Normative references

- PEFC ST 2002:2013, Chain of Custody of Forest Based Products - Requirements
- TIS 2861:2017, Chain of Custody of Forest Based Products - Requirements
- ISO/IEC 14021:1999, Environmental labels and declarations - Self-declared environmental claims (Type II environmental labeling)

2 Specification of the TFCC claim on TFCC certified” material

2.1 Introduction:

The specification of this section shall be used together with the requirements of TIS 2861 when the organisation establishes a chain of custody to use the TFCC claim on TFCC certified material.

2.2 Formal claim

The organisation shall use the claim “**x % TFCC certified**” when communicating the content of TFCC certified material in output products.

Note: Provided that the TFCC certification scheme, including this document, has been endorsed by the PEFC Council, the requirements of this document are deemed compatible with Appendix 1 to PEFC ST 2002 allowing the organisation to also use the formal PEFC claim “x % PEFC certified”

2.3 Requirements for the categories of input material

Certified material:

- (a) forest based material delivered with the supplier’s claim “**x % TFCC certified**” by the supplier with either:
- i) TFCC recognised forest management certificate or
 - ii) TFCC recognised chain of custody certificate.

Note: The chain of custody certification of the supplier delivering the claim “x % TFCC certified” is based on TIS 2861 and this document

- (b) forest based material delivered with the supplier’s claim “**x % PEFC certified**”

- (c) recycled material (other than products delivered with the “TFCC certified” claim).

Neutral material:

Other than forest based material

Other material:

Forest based material other than certified material, including forest based material delivered with the supplier's claim "TFCC Controlled Sources" or "PEFC Controlled Sources"

2.4 Additional requirements for the usage of the "TFCC certified" claim

For products covered by the organisation's chain of custody which include recycled material, the organisation shall calculate the content of recycled material based on ISO 14021 and inform about it upon request.

3 Specification of the TFCC claim on "TFCC Controlled Sources" material

Note: The TFCC DDS delivering the Controlled Sources material is described in detail in clause 4 of the chain of custody standard (TIS 2861)

3.1 Introduction

The specification of this section shall be used together with the requirements of this standard when the organisation establishes a chain of custody including the due diligence system to use a TFCC claim on output products, for which the TFCC DDS has been implemented.

3.2 Formal claim

The organisation shall use the claim "**TFCC Controlled Sources**" when communicating on output products for which TFCC DDS has been implemented.

3.3 Requirements for TFCC Controlled Sources input material

Certified material:

(a) forest based material delivered with the supplier's claim "**x % TFCC certified**" by the supplier with either:

- i) TFCC recognised forest management certificate or
- ii) TFCC recognised chain of custody certificate.

Note: The chain of custody certification of the supplier delivering the claim "x % TFCC certified" is based on TIS 2861 and this document

(b) forest based material delivered with the supplier's claim "**x % PEFC certified**"

Neutral material:

Other than forest based material

Other material:

Forest based material other than certified material, including forest based material delivered with the supplier's claim "TFCC Controlled Sources" or "PEFC Controlled Sources."